

110
111

Lake Hopatcong Illustrated

With Views and General Description of the Lake;
Its Points of Interest, Hotels, Cottages and How to
Reach Them; Early History; Advantages as a Health
Resort; Railroads and Boat Lines, Etc. ❀❀❀❀❀❀❀❀❀❀



Price 25 cents

Published by the
PERTH AMBOY EVENING NEWS CO.
Perth Amboy, N. J.

Copyright, 1911, by Perth Amboy Evening News Co.
Printed and Designed by "The World's Printing Plant," Perth Amboy, N. J.



SCENES ON LAKE HOPATCONG

Photo by Harris

General Description of Lake Hopatcong

Magnificent in its scenic grandeur, with its majestic mountains rising proudly above its placid water, broken here and there by picturesque islands, Lake Hopatcong spreads itself among the hills of New Jersey like a diamond dropped from the sky: with its sparkling surface reflecting the clear blue above, presenting a charming picture in a frame formed by the rich green verdure of the woods, with pretty hotels and cozy cottages dotted among the trees where thousands gather to enjoy its matchless splendor.

Without a doubt, Lake Hopatcong is the most popular mountain resort in New Jersey and is surpassed by none anywhere in the country.

Nowhere can the visitor find a more perfect blending of beautiful scenery, clear sky and healthful atmosphere, together with charming drives through the very heart of nature, here and there touching the shore of the lake. The entire picture is sublime. It is fifty-five miles around the lake and the distance is covered with nature's own handiwork untold to the eyes of man in a manner which holds him in awe and impresses him with his own insignificance. Here and there as one passes through this enchanted region is seen a cottage or hotel, some so widely separated that the occupants may the more freely commune with the birds, the trees and the wild flowers, with the ever present mountains nestling in whose bosom is the lake with all its attractiveness.

Not all the places are isolated, however. Those who enjoy the social intercourse of neighbors will be amply satisfied in any of the towns along the banks of the lake where the stores, hotels and cottages are clustered in a pleasing manner.

The name Hopatcong is an Indian word meaning honey water of many coves. The entire border of the lake is broken by hundreds of little inlets and harbors. These are picturesque points jutting out into the water, from any of which one can get a magnificent panorama of the lake. Cinnepiece Cove, which forms Chestnut Point, is one of the handsomest. The view is charming. The mountains tower above you while the beautiful sheet of water is at your feet. Its peaceful surface has a magnetism seldom felt when viewing any other lake.

The hills roll away in an endless chain while occasionally a peak rises above the rest and is honored with a name. Mt. Arlington is one of these, while just south of it is Mt. Hury, grand in its stateliness, a famous lookout, which is easily accessible by a good road leading to its summit.

Nothing is lacking at Lake Hopatcong. Even the summer girl is there in all her glory. She can sail, she can row, run an automobile, play tennis or climb the mountains. In any and all she is ready for a contest and she cannot be beaten.

Lake Hopatcong is only forty-six miles from New York and is just one-thousand feet above mean tide water. Lake George is seven hundred feet lower. The air here is cool, keen and bracing. There is no malaria and no insects. The mountains and the lake afford good sailing, fishing and hunting.



THE CASCADES

Photo by Harris



DR. PISEK'S LITTLE VENICE

Photo by Harris

Points of Interest

Nolan's Point, which is the oldest part and the real father of all the surrounding points of interest, is governed by the town committee of Jefferson township. It is a beautiful spot. Here many thousands of excursionists, coming by the Central Railroad of New Jersey, alight from the cars directly on the edge of the lake. Here, also, are many beautiful cottages, a store, the post office, express office and telephone exchange. The river Styx empties into the lake at this point. In reality this stream is a beautiful bay running into the west shore of the lake at about its centre and winding in among the mountains. The south shore to a great extent, remains in its original wild state of beauty, picturesque at every point, sheltered from the high winds and animated by the many canoes. Rowing about half a mile up the river Styx the bridge is reached. It is a well built wooden structure over six hundred and fifty feet long, which carries the main west driveway across the bay, four miles from Hopatcong station. This bridge is a good place for fishermen who have no boats and many a good catch is made with no danger of falling overboard.

Bishop Rock is on the west shore opposite Halsey Island and is much favored by the campers. The boats stop here, as all visitors to the lake want to see its wild scenery. It is one of the best points on the west shore to get a view in every direction.

Bonaparte Landing, named after Jerome Bonaparte, who made the greatest mistake of his life by not staying there, has a bold and beautiful shore with many delightful views.

One of nature's phenomena is the floating island. It lies in the southern end of the lake. You will find it on the map and can easily locate it. It is of considerable extent, three hundred feet long by one hundred and fifty feet wide. A remarkable thing about this island is the small trees, many of them evergreens, which cover it thickly. Corn plants of an exceedingly tiny form and the sidesaddle plant, which is not found on any of the other islands or surrounding territory grows here. The leaves of the latter are of a hollow pitcher-like form and have a wing-like appendage that extends the entire length of the leaf inside and from one to two inches outside. The rhododendron, one of the most beautiful laurels that grows, is found here in abundance. The banks are lined with sweet wild roses. Scientists have tried in vain to solve the problem of this so-called floating island. It does not move perceptibly, except to rise and fall according to the condition of the lake.



BED BUG ISLAND

Photo. Harris



SCENES ON LAKE HOPATCONG

Photo by Harris

Points of Interest= (Continued)

Sharp's Rock, which is opposite the Laurel House, is one that always attracts attention. It is a bold rock rising about twenty feet and is seventy feet long, it drops down into the water smooth and steep. It has been for years a favorite camping resort.

Raccoon Island, the garden spot of all, is the site of many handsome cottages and hotels and the famous split rock is there. This high boulder seems to have been cleft into four high sections by a great tree which has grown up through its centre. The island is covered with immense trees, a walk across, which up the Chinopee road toward Woodport, will be found one of the many enjoyable features in these parts.

Sperry Spring is on the south side of Byram Bay. Here is the most celebrated spring about the lake. It is a favorite resort for picnic parties. Farmers are scarce around Lake Hopatcong, but near Sperry Spring you will find a few tillers of the soil who have a modest number of acres and are glad to sell you a glass of buttermilk.

In Byram Bay you will see the islands called the "Three Sisters," a charming spot where vines and evergreens grow over the high rocks. The main shore here is grand and imposing. It is classic ground, only reached by the boats. The bold, jutting rock which marks the landing place is the Devil's stairs, an appropriate name indeed.

Halsey Island is one of the largest and most beautiful in the lake and has many handsome cottages. Bertrand Island is also well worth visiting and a magnificent view of the lake can be had from it. This is a favorite resort for picnic parties. The scenery is wild and off from its shores many fishermen indulge in the sport and make good catches.

Byram Cove is eight or nine miles away. Steaming up from the depot, at no time can you see one-half of the lake at once. It is a most picturesque place for cottages.

On the east side of the lake is the borough of Mt. Arlington, which of late years, has grown rapidly. The number of handsome cottages will be noted on another page. Here you will find several stores, a post office, telephone exchange, the St. Peter's Episcopal church, Methodist church, "The Lady of the Lake" Catholic church, a large and handsome borough hall and a school building.

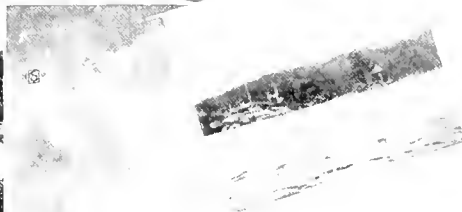
The south end of this charming body of water is known as The Landing, where the Delaware, Lackawana & Western railroad station is and where the two boat lines start. It is governed by the town committee of Roxbury township. At this point you will find two stores owned by Mr. Theodore King. One is a general store in which is the post office and the other an ice cream and confectionery. Cottages are few here and there is but one large hotel, known as the Westmoreland.

The west side of the lake is known as Hopatcong Borough and is governed by a mayor and council. It has over 100 handsome cottages and many hotels, but no stores. The Hopatcong House is the oldest and largest hotel on this side. There is a telephone exchange, livery and automobile stables. It is about two miles from the landing.



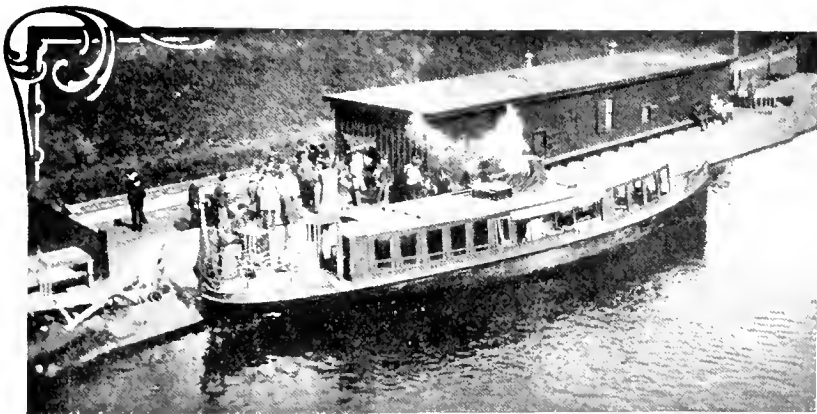
DR. PISEK'S HARBOR

Photo by Harris



SCENES AT LAKE HOPATCONG

Photo by Harris



STATION LANDING

Photo by Harris

People stopping at the east side of the lake can get Mt. Arlington station and take the stage but a short distance from the Borough of Mt. Arlington. Stages meet all trains and will convey you to all parts of the lake at a moderate price.

In going from Philadelphia or Trenton, you can take the Philadelphia & Reading Road to Bound Brook and then take the N. J. Central (which station is at Nolan's Point on the lake) changing cars at High Bridge; or take the Pennsylvania R. R. and change at Elizabeth for the N. J. Central or at Newark for the D. L. & W. R. R. Those coming from Stroudsburg, Easton and Delaware Water Gap should take the D. L. & W. R. R. and get off at the Landing.

There are two boat lines at the Landing that meet all trains. The Black Line starts at the station in the canal, passes through the lock and makes all landings, stopping at private cottage wharfs when requested. The fare is 25 cents straight. The White Line starts just across the road on the lake and makes all landings and stoppages as the Black Line. The rate is 25 cents single; round trip 45 cents.

Both of the above lines also carry baggage and freight.

These boats can be chartered by private parties at a moderate sum. The ride round the lake is about twenty five miles and is a delightful one, passing many of the handsome cottages. The owners names are cheerfully given by any of the employees on the boat. This is really the best way to see the cottages.

Lake Hopatcong==How To Get There

When starting from New York, Brooklyn or Jersey City you have the choice of two lines, the D. L. & W. R. R. and the N. J. Central. The former's depots are at the foot of Barclay street, the other at the foot of Christopher street and West street in New York.

The N. J. Central depot is at the foot of Liberty street, on West street, New York. Those starting from New York will find the D. L. & W. a shorter route. On this road many trains run daily and on Sunday's there are several. On the N. J. Central there are fewer trains. The main station of the D. L. & W. R. R. is at the Landing (at the south end of the lake).



ON THE CANAL

Photo by Harris

Early History of Lake Hopatcong

As in all the states and territories in the United States the Indians were the first settlers at Lake Hopatcong. According to history in 1758 they surrendered their title by treaty to the lands of New Jersey, reserving their rights to hunt and fish through the wilds of the state. The name of this tribe as recorded was "Nariticongs" or Lenni Lenapes which afterward became the well-known tribe of "Delawares." Previous to this Lake Hopatcong was a centre of Indian life, a large settlement being near and on Halsey Island. It was a very peaceable tribe depending on their hunting and fishing as a means of livelihood. As early as 1726 they refused to join the Iroquois against the English.

In 1867 the state having become thickly populated with the whites, the government made an agreement with the red men to go to the Indian territory, each Delaware to be allotted 160 acres of land and each one was to contribute to what was called the Cherokee National fund, one dollar per acre for their land; also matched the Cherokee fund of \$678,000 and their land holdings in Kansas computed at \$1,000,000.

There were other tribes of Indians in the state, but "Nariticongs" is the one particularly identified with Lake Hopatcong and its islands and surroundings. They now occupy with the "Caddos" and "Witchitas" a reservation on the Washita River a short distance from Fort Sill and are peaceful and ardent tillers of the soil.

Old Black Beaver, their chief who died a few years ago, was a strong friend of many army officers, General McClellan and also General Marcy, General McClellan's father-in-law wrote of him. He was one of the most trusty guides and scouts in the west and had great influence not only with his own tribe, but with all the Indians whose chiefs often took counsel with him. He was a religious man, having been converted by a missionary and became a member of the Methodist church mission, later he joined the Baptists and himself established a mission among the Witchitas which is in existence at this writing.

The name Hopatchung, or Hopatcong, was given to the lake by the Indians. It was sometimes called Musconetong, the terminal "cong" seems to apply for some reason or other to several names, viz: Narticong, Lopatcong, Pohatcong and others.

Soon after whites appeared, prospectors discerned iron ore of a high grade in the mountains above the lake. It was mined extensively and to this day the iron ore mines of Morris and Sussex counties are being worked successfully, notwithstanding the abandonment of some of the old mines.

In 1832 the Morris Canal Company obtained the right to raise the level of the lake by a dam near the outlet and since then have, at different times, added to it, which has raised the level over twelve feet and changed the size and shape of the lake very materially.

Lake Hopatcong has been a noted fishing ground for fifty years, but it is only within about twenty years that its desirability as a summer resort became generally known, and its rise since that has been steady but rapid.

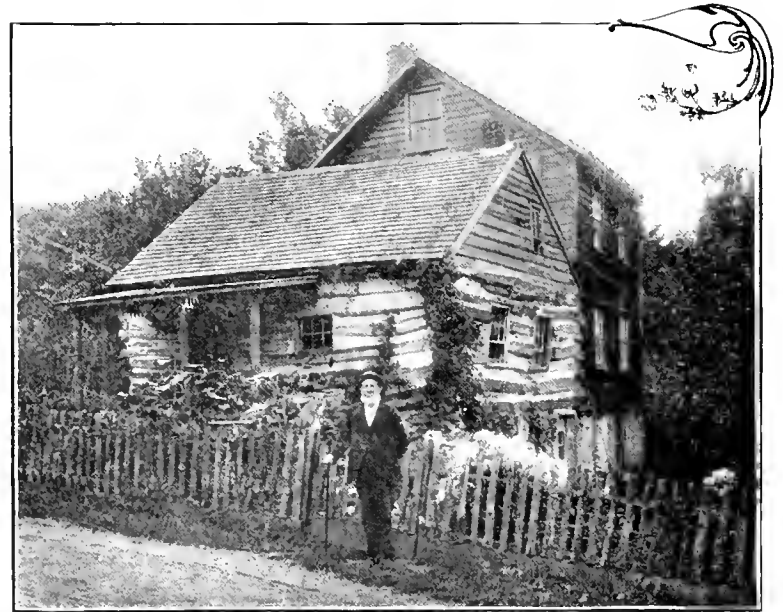


Photo by Harris

Automobiling, Driving and Wheeling



AUTOMOBILE DRIVING Photo by Harris

Cranberry Lake is a small summer resort on the Newton branch of the D. L. & W. R. R. It has one large hotel which is patronized during the summer. Several pleasure resorts and an attractive place for Sunday excursions.

Andover is a town of 1,000 inhabitants and in a section where the storekeepers do a large farmers' trade. It is about ten miles from the lake.

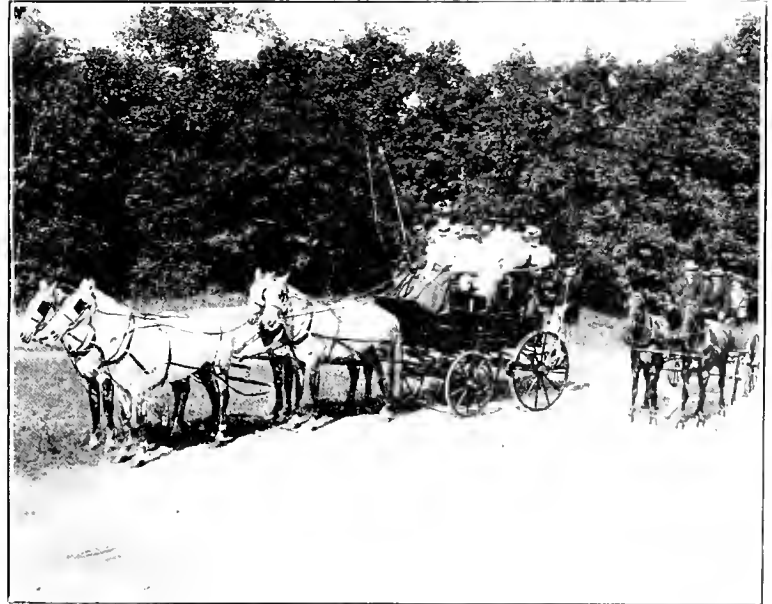
Newton is the County Seat of Sussex County and has a population of 6000. Several hotels and stores and a number of manufacturers, a bank and a trust company. It is growing fast, many summer boarders crowd the several boarding houses and hotels. It is about sixty miles from New York on the D. L. & W. R. R.

Budd's Lake is a small summer resort with one large hotel and several boarding houses. It is noted for its fishing attractions. It is about three miles from Stanhope. Driving along up hill and down, at times surrounded on both sides by the mountains raising hundreds of feet above, thickly studded with im-

Many beautiful drives are around Lake Hopatcong and to nearby towns. The roads are nearly all macadamized, the few that are not are smooth and solid. A most delightful drive is from the Landing, up the west side of the lake to Port Morris, Netcong, Stanhope, Budd's Lake, Cranbury Lake, Andover and Newton, a distance that is about twenty-five miles the round trip.

Port Morris is a pleasant little village with about five-hundred inhabitants. It is on the D. L. & W. R. R., and many of the employees of the road reside there. There are several good stores, post-office and shops.

Netcong is a thriving borough having a population of 1,200. A handsome bank building in which the Citizens' Bank Corporation does a large business. There are several manufacturers. At Netcong is the railroad station for Stanhope just across the stream. It is a small village of about 1,000 inhabitants. A church, two hotels, drug and other stores are there.



OUT FOR A DRIVE

Photo by Harris

Automobiling, Driving and Wheeling= (Continued)

mense trees and the ground during their season thickly covered with beautiful wild flowers. It is a charming sight in summer season.

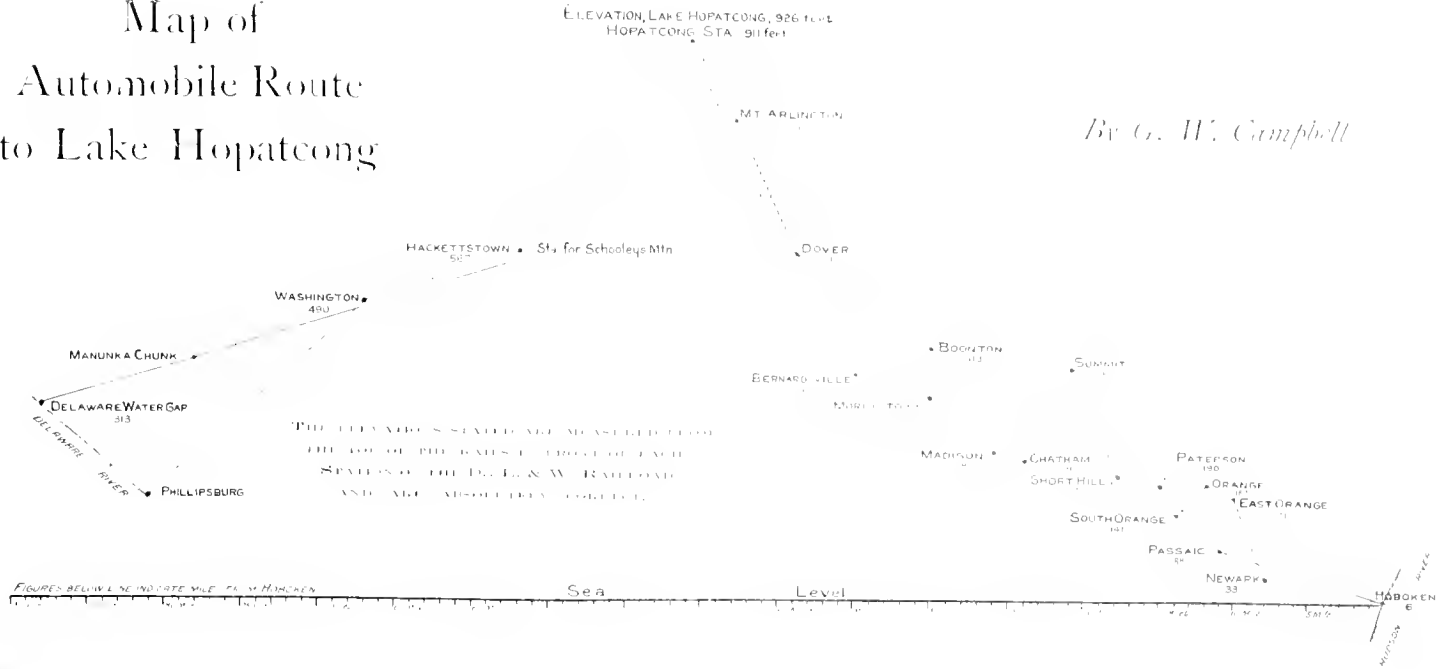
Another attractive drive, is starting from Mt. Arlington on the east side of the lake, crossing the railroad and canal at the Landing, from there to Ledgewood; this is a small town of 200 people, it has two hotels and two stores, a large grist mill and a number of other enterprises. Then down to the magnificent Succasunna Plains to Succasunna; it is a small attractive village of about 500 people, several churches and stores, two hotels, and a number of boarding houses; it lays almost perfectly level, the streets are wide and fine; it is on the line of the D. L. & W. R. R. and the N. J. Central R. R. is but half-a mile away.

Kenville is a small village with a population of about 300. In it is a large hotel and several stores, a large lumber and coal plant and is on the lines of the C. R. R. of N. J. and the D. L. & W. R. R. Dover with a population of 7,000 is a very enterprising city; it has both electric and gas plants, several handsome churches, schools and many stores, as well as hotels, the principal one being the Mansion House. A trolley line running to Wharton and Rockaway. Several foundries and other manufactories. It is only ten miles from Lake Hopatcong and 40 miles from New York on the main line of the D. L. & W. R. R. The trains run frequently and a number of commuters go daily. Mount Tabor is about 37 miles from New York and about 17 miles from the lake. There are a great many cottages and boarding houses and it is a favorite summer resort. Every summer the great Methodist Camp Meeting is held there. A short distance from Mount Tabor you reach Morris Plains. Here the New Jersey State Asylum for the insane is located. It is visited by thousands of people every year. Morristown is one of the handsomest cities on the line of the D. L. & W. R. R., 31 miles from New York City and about 19 miles from the lake. It has a population of 15,000. Many wealthy people have beautiful residences here and the number of business men who commute daily to New York is large. There are several churches, graded schools, banks, trust companies and newspapers. The stores are large and well stocked. It is a fashionable resort for summer boarders who thrive on the bracing air and fresh vegetables. On returning there are several ways, the most direct is from Dover to Kenville to Mt. Arlington Station. Another most delightful drive is from the landing up to the west side of the lake to Sperry Springs which is about five miles. A short distance away the road forks the road leading to the right is the lake side boulevard and follows the shore to Pickerel Point and up to the river Styx bridge. The left hand road leads to the same point but is a shorter drive. After crossing the bridge the roads branch off in different directions through woods. Woodport is a small village at the upper end of the lake with a population of 100. The drives through the woods are enlivened by many birds of different varieties constantly singing. On another page in this book will be found a map showing the best roads for automobiling and wheeling from New York to the Lake, also to Easton and Delaware Water Gap. This map gives the altitude of each town through which you ride. The tourist in driving around the lake and to the few drives we have mentioned will ascertain that there are many others equally as attractive, some in remote districts over roads that are passable and the surroundings beautiful. There are always in country places new drives to be discovered and while you will find those quoted are the most noted ones yet they may not prove as attractive as the new venture.



Map of Automobile Route to Lake Hopatcong

By G. W. Campbell



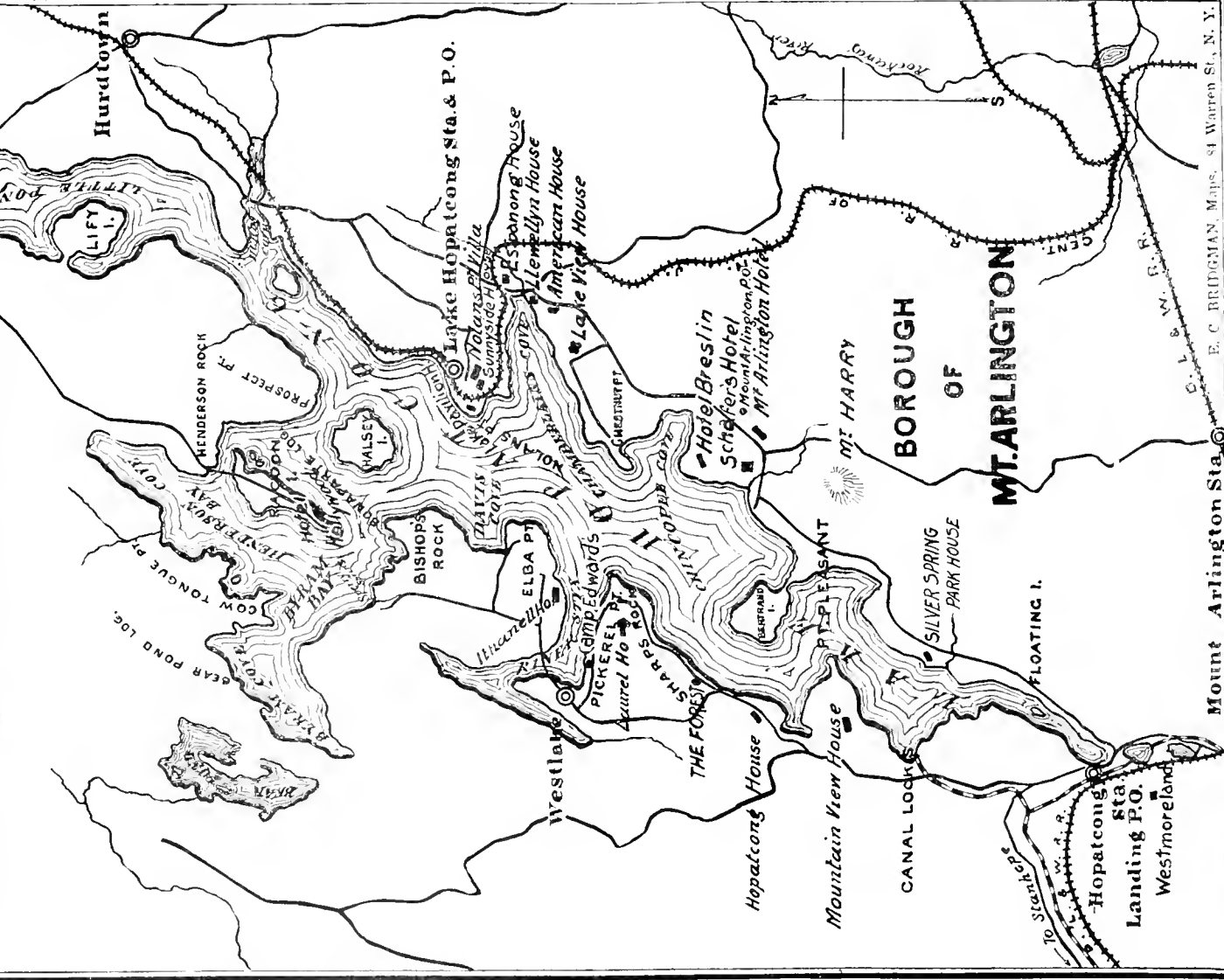
Altitude of Lake Hopatcong, compared with other Lakes

It is interesting to compare the altitude of the famous Lake Hopatcong with other Lakes. Some of the figures are as follows:

| Name | Elevation above the sea | Name | Elevation above the sea |
|---------------------|-------------------------|----------------------------|-------------------------|
| Lake Champlain..... | 99 | Canadigua Lake..... | 655 |
| Saratoga Lake..... | 155 | Lake Kenka..... | 715 |
| Lake Ontario..... | 232 | Owasco Lake..... | 725 |
| Lake George..... | 310 | Rockland Lake..... | 760 |
| Oneida Lake..... | 307 | Schroon Lake..... | 720 |
| Cayuga Lake..... | 357 | Skaneateles Lake..... | 795 |
| Seneca Lake..... | 447 | Lake Hopatcong..... | 926 |
| Lake Erie..... | 595 | Otsega Lake..... | 1193 |
| Greenwood Lake..... | 621 | Chattanooga Lake..... | 1291 |
| Lake Mahopae..... | 653 | | |

Lake Hopatcong is third in altitude, but in all other respects, scenery, hotel accommodations and the large number of cottages, it ranks first.

MAP OF LAKE HOPATCONG



Mount Arlington Sta. © E. C. BRIDGMAN, Maps, 41 Warren St., N. Y.

Camping and Sailing

Lake Hopatcong is a favorite resort for lovers of camp life. Hundreds avail themselves of this opportunity and form parties to spend a few weeks under canvas.

The expense is comparatively small. There is a great variety of fish waiting to be caught and canned goods of all kinds are easily packed and shipped. It's a novelty to do your own cooking. There is always someone in the party who thinks he can do it. Tents can be procured in all sorts of styles and sizes. A large oil stove is needed along with a table, frying pans, a few pots, kettles, cheap dishes, knives, forks, coffee and tea



SAILING

Photo by Harris

pots, camp stools and the pepper, salt and mustard bottle. A cot is essential unless, as some do, you roll up in a blanket and lay on the floor.

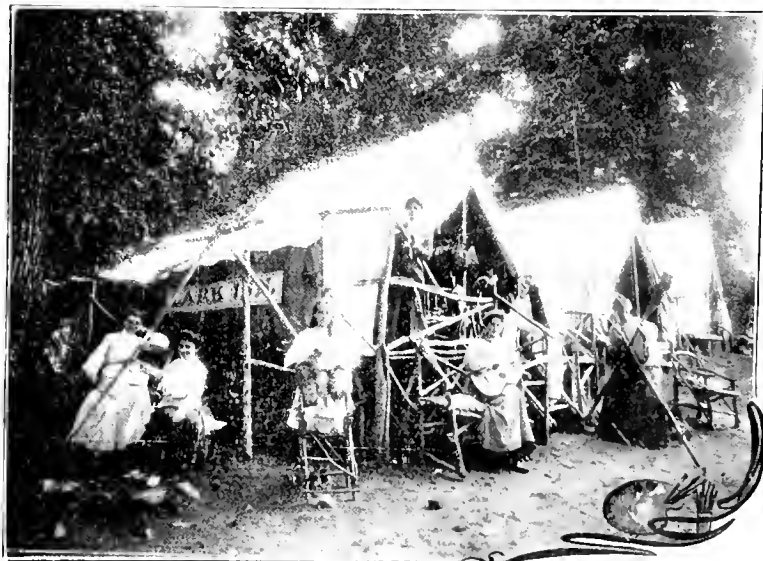
The greatest amusement in camping at the lake is fishing and canoeing. Boats of all kinds and sizes can be hired by the day or for the length of time one wishes to remain.

A season's experience always results in another visit to this garden spot of all camping grounds and the same parties generally return another year.

Every year, some time during August, the annual carnival and regatta is held. Handsome prizes are awarded, and this fascinating event is eagerly looked forward to. Thousands of persons take advantage of the many excursions that come here for that day. There are tub, rowing and sailing races, swimming matches, all of which are hotly contested and afford great sport and amusement.

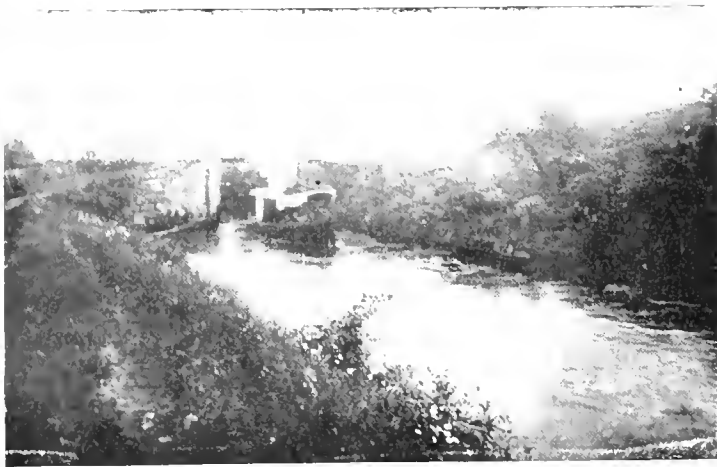
The Black Line of steamers start in the canal near the Lackawanna depot, going through the lock, they make the circuit of the lake stopping at all landings, public or private, if requested. The boats meet all trains and carry all sorts of freight as well as passengers.

The White Line has six steamers and starts in the lake near the depot.



CAMPING

Photo by Harris



GOING THROUGH THE LOCK

Photo by Harris

Following is a list of the dangerous places to go and shoals to be avoided:

There is a ledge fifty feet out to the north, near Dr. Van Wagener's point, shoals extend for some distance out from Sperry Spring, the sail around Raccoon Island can be made at most any time, but run slowly, you may strike some obstacle, north end of Halsey and Raccoon Islands the water is shoal; be cautious when sailing between Halsey Island and the mainland, there is shoal water above Nolan's Point, keep toward Halsey Island, there are timber obstructions fifty feet south of Allen's Pavilion, There's a rock forty feet out from first dock east of Smith's dock, Nolan's Point, there are many rocks in shore and north side of Chamberlain's Cove. Keep a long distance from Chestnut Point, in and around Chincippe Cove are many rocks; half way from Arlington dock to Tilt's boat house are rocks, in rounding the north west corner of Bertrand Island keep 200 feet off, fifty feet south of Mt. Pleasant Point and 60 feet out is a rock, just south of Hopalong House dock, are bad shoals, in going south from there bear at once well out in the lake, from Forest Club to Hopalong House dock, bear 100 feet off, there is a bad reef 200 feet west of Cogan's dock and about 50 feet out, in sailing on the river Steer towards the bridge, keep 200 feet from the south shore, avoid crossing a line from the Mini. dock to south end of bridge, don't go south of that line.

Steam and Other Launches

There are a large number of steam and other launches on the lake, both large and small; the naphtha boats predominate. On both sides of the lake are places where boats can be chartered at a moderate price and the trip around the lake is one of beauty all the way, a distance of about twenty-five miles or more.

Capt. W. C. Cliff's handsome steamboat "Gladys," flying red, white and blue signal flag, is in constant demand; his advertisement on another page gives instructions how to reach him.

The shore along the lake on both sides is lined with private houses whose owners take pride in their handsome boats and many a friendly spirited race is enjoyed.

There are not many sail boats on the lake, but among them is one named "Little Minister," which has never been defeated in her contests; she is owned by L. R. Edwards, a retired New York banker.

In anticipating a day's sport on the lake, parties should consult our advertisements and write in ample time for a date, not depending on your securing a boat at once on application. Write and fix a date and you may rest assured the boat or boats will be at your disposal.



THE REGATTA

Photo by Harris

Cottages of Lake Hopatcong

No expense is spared in the erection of summer cottages at Lake Hopatcong. They rival the handsome structures in Newport and Narraganset. In no other place in the state will be found so many different styles of architecture, while the material used in their construction is of every kind imaginable. There are several hundred cottages about the lake. They are owned by bankers, lawyers, physicians, merchants and retired business men from all parts of the country. The facilities for reaching the lake make it convenient for commuters to the cities.

Around many of the cottages the grounds are beautifully laid out. Handsome trees and flower-beds are seen, while other places are allowed to remain in their original rustic beauty, which is often more enchanting than the modern efforts of the landscape gardener.

These homes of the summer residents form a picturesque scene when driving or sailing around the beautiful lake. One of the most prominent cottages in the borough of Hopatcong, is that of Mr. L. R. Edwards, a retired banker. It is a handsome, large building at Bishop Rock, standing high above the lake. A long, wide stone and concrete walk leads down to his large boat-house in which are several boats. Among them is the yacht "Little Minister," 25 feet long and 7 feet beam. This boat has won every race in which she has been entered. Mr. Edwards has a handsome gasoline yacht, "Arellee," which is very fast and accommodates thirty people.

Rev. Dr. Gessler's "Tanglewild" cottage is beautifully situated near the lake. Mr. Gessler is secretary of the Baptist Congress of the United States. Not far from Mr. Edward's commodious mansion is the cottage owned by Dr. Lewis S. Pilcher, called "The Eagles Nest." It is 150 feet above the lake. It has a conservatory commanding a grand view of the water. Dr. Pilcher is senior surgeon in the Seney and German Hospitals in Brooklyn.

Miss Drake's "Katrina" is a beautiful place, with well kept lawns and substantial stone-walk to one of the handsomest private boat-houses on the lake. Mr. W. H. Rankin, former mayor of Elizabeth, N. J., has a handsome cottage with many rooms; also a strongly constructed wharf and float. Mr. Mark Ustace, of River Styx, owns the large and beautiful cottage "Kingston." Mr. Dwight B. Smith, merchant, also enjoys life at River Styx, in a charming cottage. Mr. L. Dennis a member of the bar in New York City, and Lawyer Quail, of Morristown, N. J., also have commodious residences at River Styx. The Kenilworth Club House is a popular resort here. Mr. John P. Miller is located at "Camp Edwards." Many handsome cottages are at what is called Pickerel Point. Mr. Thos. B. Atterbury's charming



SOME COTTAGES AT THE LAKE

Photo by H. J.

Cottages of Lake Hopatcong= (Continued)

stone house attracts much attention. Mr. N. F. Moore's immense stone and concrete cottage called "The Moorings," is beautifully located, having a pretty terrace. The whole front, up to the porch, about twenty feet high is thickly covered with English ivy. He has a large boat-house and on each side of the broad stone walk are eight stone pillars above which is a short gas pipe from which a beautiful light presents itself at night from the lake. The lawn is well kept and there is a large summer pavilion on the bank of the lake. Mr. J. Aldred's "Moss Rock" cottage is a handsome two-story frame building with many rooms. Mr. Aldred is justly proud of the long winding stone walk down to his boat-house and dock. The stones are on the side of walk, arranged in a wall a few feet high and placed in an odd position, adding much to its attractiveness. Another feature of this place is the large garden which yields an abundance of vegetables and berries. Very few of the cottages are surrounded by ground that is tillible. Mr. Hudson Maxim's "Maxemburst Cottage," is a commodious green building located on the hill. Mr. Jaegle, vice president of the First National Bank, of Hoboken, and treasurer of the Hoboken Coal Company, enjoys a palatial residence near Sharp's Rock. Mr. Alexander Lambert is pleasantly located at Point Pleasant. Mr. Gustave Rheinberg's cottage is called "Oldfield." It is near Ingram's Cove, and this handsome building is on a hill at one of the highest points on the lake. Mr. I. C. Wywyer, on "The Styx," has a prominent and beautiful location. Mr. David Updyke's "Camelot" cottage, at the west end of Point Pleasant and Mr. Goble's cottage are beautifully situated. Col. G. G. Green's cottage, "The Castle," Mr. A. C. Roberts' large frame house and Mr. E. Arnott's, are among those admired at Mt. Harry. Breslin Park is a magnificent place. Here the handsome frame house of Mr. A. Potier is located, and on the south side the stately residences of Mr. A. Tilt and Mr. Henry Allenbrandt, are admired by everyone. Mr. G. Vintschger has a pretty frame cottage. Mr. F. G. Hempler's expensive home is built of imported cut stone. It has a high tower. Miss Lotta Crabtree, the actress, has a handsome, but peculiar shaped cottage on which red shingles are used for siding. Miss Catherine Walsh has a frame cottage. The four cottages called "Bankers' Row," are beautifully situated on a high elevation with spacious lawns covered with trees and shrubbery. The one occupied by Mr. Philip H. Hexemer is made of stone and shingles, as are Mr. Henry Berben's, Mr. R. S. Rabe's and Mr. L. V. Hengsler's. These gentlemen reside in Hoboken during the winter. Dr. Harry Upchurch is the resident physician living in the borough all the year round. "The Idle Hour" is a pretty cottage owned and occupied by Mr. C. C. Cook, a carpenter. Mr. A. H. Blume's "Elma" Villa is here, as is also the summer home of Mr. Zeller, a manufacturer. There are a number of cottages on Halsey Island. Dr. C. N. Cox, of Brooklyn, has a delightful frame residence; Mr. H. Purchards has one of stone and wood, and Mr. C. Hartedgen, of Newark, N. J., has one entirely of stone. Mr. Richard G. Sip, a manufacturer of fire extinguishers, has a frame house and Mr. C. Cope, a theatrical man, of New York, has a charming home along the lake. On Raccoon Island, in a pretty frame cottage, Mr. J. L. Griggs, of Somerville, N. J., and former prosecutor of Somerset county, resides. Mr. J. S. Carter, a merchant of Easton, has a frame cottage here. The "Ivanhoe" Fishing Club, of Easton, occupies a handsome building which is largely patronized by its members and their guests. In all, there are about twenty cottages on the island. On Byram bay there is a beautiful cottage, the home of Mr. Richard Kolb, a restaurant proprietor of New York.



THE FOREST AND LAKE

Photo by Harris

Cottages of Lake Hopatcong—Continued

Rev. Vincent Pisek, pastor of the only Bohemian church in New York, has a modest residence. E. F. Church, an insurance broker, spends much his time during the summer here. Mrs. R. Byington, of Newark, and J. R. King, of the same city, occupy handsome residences at this place. At Nolan's Point, former senator E. A. Thompson, of Somerville, N. J., has a handsome large frame cottage. It is called "Rock Ledge." Mr. H. W. Cortwright's frame cottage is called "Boring View." At Great Cove are the "Jolly Brothers" club house, the oldest club on the lake and the Old Point Comfort club house. Mr. G. O. Zeller's, a prominent New York chemical manufacturer, has a handsome cottage at McGregor Park. Mr. George W. Campbell, real estate broker at Lake Hopatcong, with offices at 150 Broadway, New York City, has a comfortable cottage named "Iverness," near "Enterprise" Cove. Mrs. J. U. Case, of Somerville, N. J., has a pleasant cottage here also. Cottage life is one of the features of Lake Hopatcong. It is a delightful home resort. It is only necessary to observe the extensive building going on here continually to be convinced of this.



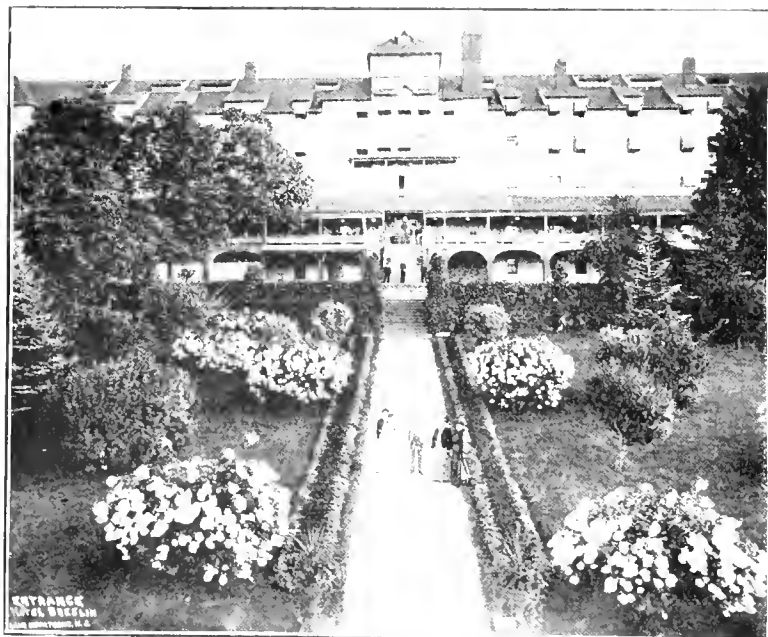
MOSS ROCK COTTAGE
Owned by Mr. J. Aldred, at Pickeral Point



ELMO VILLA
Owned by Mr. A. H. Blume

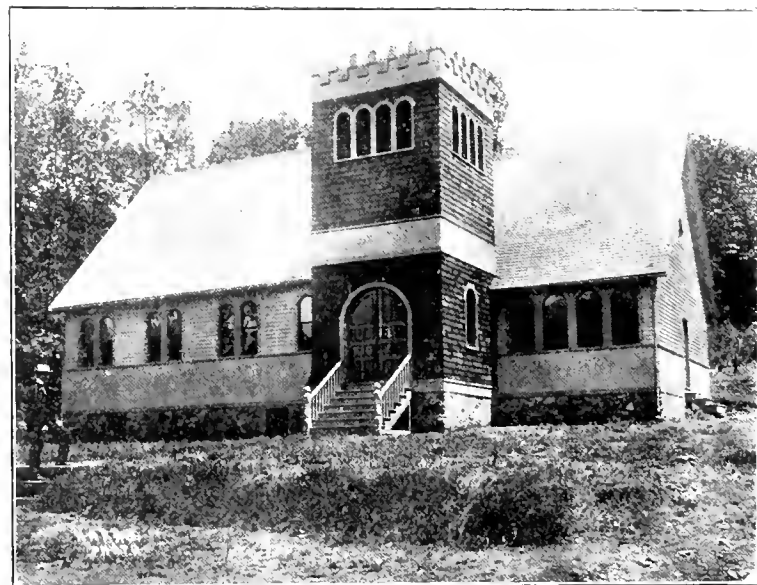


FERN VILLA
Owned by Mr. G. O. Zeller, at McGregor Park



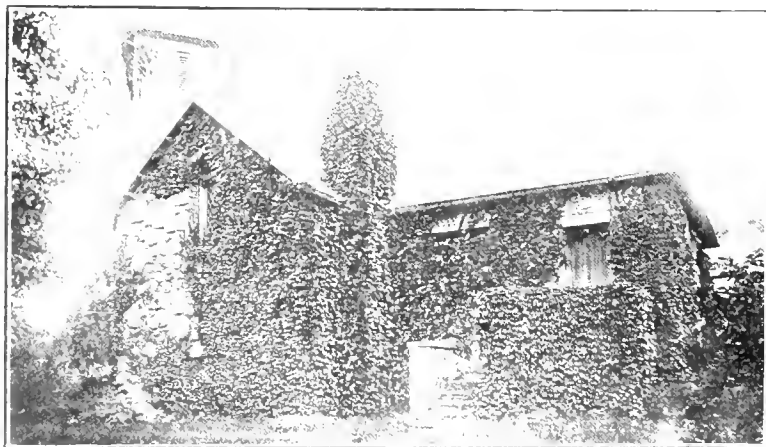
HOTEL BRESLIN
owned by the Lake Hopatcong Club

Photo by Harris



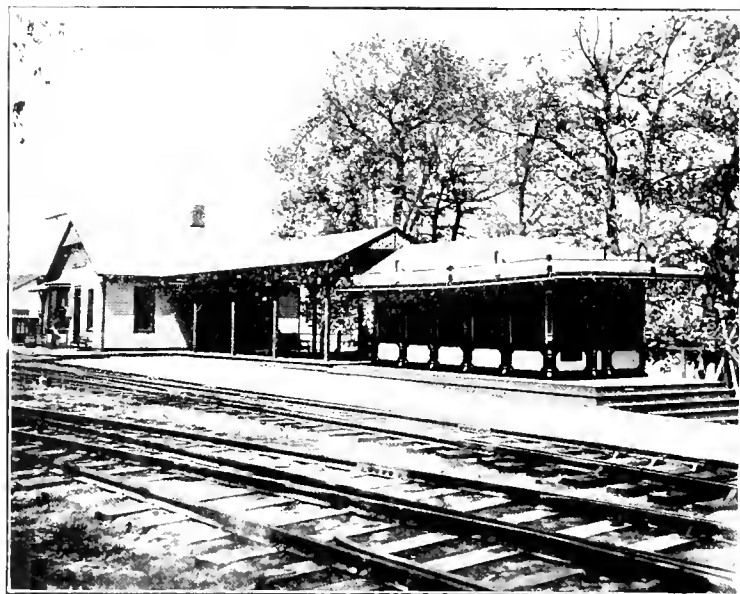
METHODIST CHURCH

Photo by Harris



ST. PETER'S EPISCOPAL CHURCH

Photo by Harris



N. J. C. R. R. STATION AT NOLAN'S POINT

Photo by Price

Fishing

Nearly all men and ladies, too, delight in fishing. The true lovers of the sport will sit quietly, waiting for a bite a long time without growing impatient. But this is not necessary at Lake Hopatcong.

The proper thing to do is to engage the services of a guide, who will take you in a good size row boat to the best fishing places for a moderate compensation. But you are assured of a good catch if you try your luck with your party alone.

Black Bass, pickerel, perch, sunfish, catfish and eels are here waiting to be caught. The bass and pickerel are very large. For bass and pickerel use minnows for bait or a bright troll. The live bait is best when it can be procured.

The best fishing grounds, the guide will tell you, if you go alone, is west of Bertrand Island, about two feet north of Mt. Arlington dock.

In the river Styx you will be made happy. Off Dr. Carter's dock and about 100 feet on the south side of Davis' Cove are excellent places.

Try the channel from Halsey Island to the lime kiln. Many prefer fishing between Raccoon and Halsey Islands in the shallow water. In Byron Cove many fishermen go. To be candid, one can go anywhere on the lake and be assured of a good day's sport.

Fish and Game Laws of New Jersey

1905

OPEN SEASON

Hare, rabbit, quail, partridge, Nov. 10th to Jan. 1st
Grouse, pheasants and squirrels, Nov. 10th to Jan. 1st
Woodcock, July, Sept. 1st to Dec. 31st
Snipe, March, April, Sept. 1st to Dec. 31st
Rail bird, marsh hen, or mud hen and reed bird, Sept. 1st to Jan. 1st
Upland plover, Aug. 1st to Sept. 30th
Geese and ducks, Sept. 1st to May 1st
Brook trout, April 1st to July 15th
Bass and perch, May 20th to Nov. 30th
Pike and pickerel, Jan. 1st to May 20th and Nov. 30th
Shore birds, surf snipe or bay snipe, May 1st to Dec. 31st



A GOOD CATCH

Photo by Harris

Fish and Game Laws of New Jersey= (Continued)

WHAT IS ALWAYS UNLAWFUL

To take or to attempt to take any game except by the use of guns held at arm's length. Fine, \$20.

To take or to attempt to take any fish in any manner excepting with hook and line, excepting taking minnows for bait with a seine not more than thirty feet long, excepting in ponds and lakes having an area of over one hundred acres where seines of fifty feet in length are permitted for bait fishing; taking eels with baskets or weirs between the fifteenth of September and the last of October, and taking eels with wicker baskets anchored on the bottoms of streams and ponds. Fine, \$20.

To hunt or kill deer at any time. Fine, \$100.

To have trapped game in possession. Fine, \$20.

To hunt on Sunday or early firearms in the fields or woods or on the waters on Sunday, or to hunt for quail, partridge, pheasant, woodcock or rabbits when there is tracking snow on the ground. Fine, \$20.

To pollute streams. Fine, \$200.

To use medicated bait or explosives of any kind for taking fish. Fine, \$100.

To draw off waters to take fish. Fine, \$100.

To use set-lines in waters inhabited by pickerel, pike, pike-perch, bass or trout, or to use any contrivance in fishing having more than three hooks or one hurr of three hooks or to have such contrivances in possession. Fine, \$20.

To permit the erection or maintenance of unlawful contrivances for taking game and fish, applies to owners and tenants of land. Fine, \$20.

To use carp for bait or in any other way to put carp in fresh water. Fine, \$20.

To capture, kill, injure or to have in possession insectivorous and certain other birds and to rob birds nests. Fine, \$20.

To hunt geese, ducks or any water wild fowl, except between one hour before sunrise and one

hour after sunset; to hunt any kind of water wild fowl from boats not propelled by oars or paddles. Fine, \$20.

To catch or keep trout less than six inches in length, black or white bass less than nine inches in length, or pike-perch, pickerel and pike less than twelve inches in length. Fine, \$20. Does not apply to grass pike, a small pike frequenting brooks.

To take trout, bass, pike, pickerel and pike-perch between 6 p. m. and daylight. Fine, \$20.

To permit dogs to run rabbits at night at any time, or to run at large in woods or fields inhabited by rabbits or game birds except between the first of October and the first of February, or at any time in woods or fields inhabited by deer. Fine, \$20.

To remove quail, grouse, woodcock, squirrel hare, English and ring-neck pheasants from the state. Fine, \$20.

To kill more than thirty marsh hens or mud hens in one day. Fine, \$20.

Farmers and fruitgrowers have the right to trap rabbits under certain restrictions.

Dealers have fifteen days after the close of the season in which to dispose of game.

To the above may be added the following prohibitions, which while not the subject of legal enactment, are recognized as binding laws of behavior by all reputable lovers of the pursuit of game and fish.

Never violate the letter or spirit of the game laws, never take more fish or game than you have convenient use for; never be insolent or impolite to a landowner who orders you off his premises; for although he may not own the game or fish you are after he has the right to exclusive possession of his property, never fail to destroy a net or trap when you find one set; never shoot at a game bird except on the wing; never kill the last quail in a covey, leave some to breed next year, never forget that game laws are intended to improve and increase sport, and not to prevent or restrict it.



Photo by Harris

Bathing

No person feels better than after indulging in a bath, particularly so when in the sweet waters of Lake Hopatcong. There are many places around the lake conducted on business and sanitary rules, making it perfectly safe for any adult or even child to indulge in a dip in the lake.

Early morning is the favorite time with many and probably the most beneficial, as it whets up your appetite and the hotel man

suffers a loss by the extra large meal you eat. It is wise not to go in bathing until two hours after eating, three may be better.

Bathing is one of the most healthful sports, as well as amusing. In the water many games can be played by skilled swimmers. Ladies will find bathing shoes very desirable and a large straw hat, as the sun blisters. Through the season at several of the bathing houses there are swimming matches, open to all comers, at which valuable prizes are contested for.

As a Health Resort

Many people of the United States spend time and money in going to foreign countries for the benefit of their health, totally ignorant of the benefits of the dry, bracing atmosphere and the pure drinking water found at Lake Hopateong and its immediate surroundings. One week's visit at this, the pride of New Jersey's popular summer, as well as winter resorts, will convince all of the healthfulness of the place.

The air is cool and bracing and a person's appetite increases from the first day. Dyspeptics will soon ascertain that life is really worth living. There are no factories to pollute the air with smoke.

Many of the residents, and those who built and occupy their handsome cottages, first came to the lake to test the beneficial effects of the atmosphere and the water. One test was sufficient to satisfy them that Lake Hopateong was an ideal spot in every particular. Reference can now be given to several well-known New York physicians who were skeptical, doubting the veracity of those who advocated the healthfulness of this, now popular resort.

The advantage of walking, rowing, bathing and sailing gives beneficial exercise, and, if parties wish to indulge in the beautiful drives, they can do so at a small expense. Children particularly, who are in ill health, improve so rapidly as to surprise their doting parents.

Lake Hopateong is a place where a man, run down by over brain work, will soon recuperate and enjoy an appetite which will startle him. The nervous mother, when she sees how happy and improved in health the children are, loses all her nervousness and rapidly improves in health herself.

Lake Hopateong is about sixty miles around and the visitors for their health have a large territory from which to choose. The same pure mountain air, which sweeps over the lake even in the hottest day in summer, is found at all parts. In other places the air is cool and invigorating and at the time one feels like retiring, the heavy blanket is an essential covering. Then, too, think what a comfort and blessing it is to retire to your peaceful couch and and not be annoyed by the "Jersey Mosquito!" These natives of some parts of New Jersey never visit Lake Hopateong, evidently the atmosphere is not to their liking. This is an important point in choosing a New Jersey summer resort. At other resorts the wicked little insect often so annoys visitors that they leave and by so doing, lose all the benefits to health and good nature otherwise obtained.

No mosquitoes are here and flies are rarely seen. In a nutshell, for perfect rest from all care and a sure beneficial result to you and the whole family, you cannot do better than visit Lake Hopateong.



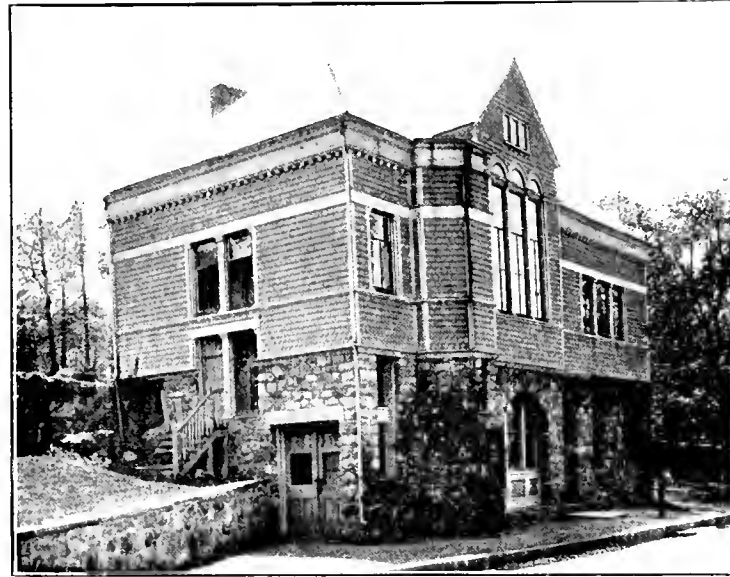
A Winter at Lake Hopatcong

The summer visitors at Lake Hopatcong almost invariably come back during the winter to spend a week or more. It is cold, but the air is bracing.

As a rule, skating and sleighing are good. One particular and very interesting object of interest to the visitors, is to watch the hundreds of men gathering the ice harvest. The scene of greatest activity is around Nolan's Point, where there are large ice houses. They have a capacity of many hundreds of thousands of tons. Many thousand tons are shipped to New York to be stored. The cutting is done by a machine drawn by horses and is an interesting sight. Some seasons several crops are gathered.

There are frequent hops given by some of the winter hotels and for those who make their homes at the Lake all the year around social life is lively. Many, notwithstanding the cold blasts of winter, cut holes through the ice and make good catches of fish, the same as is practiced in the many lakes of Michigan.

One peculiar feature about Lake Hopatcong is that one rarely meets a person with a cold in the head. The nature of the air is such that it is almost impossible to be attacked and those suffering with a cold when arriving there are agreeably surprised to find it disappear almost in a night. Lake Hopatcong and its surroundings are a model winter resort.



BOROUGH HALL, MT. ARLINGTON

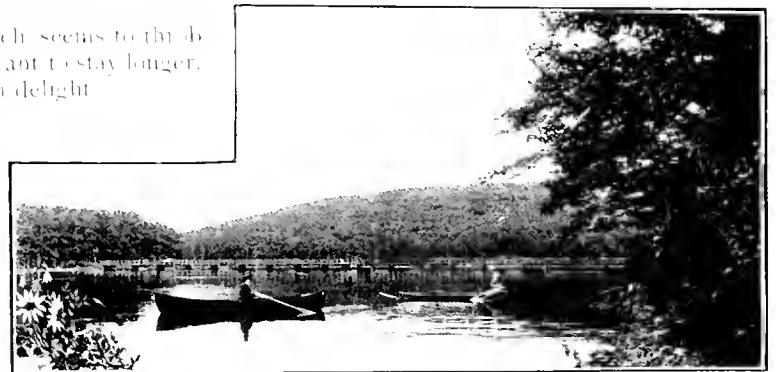
Photo by Price

For those who have never spent a winter in the mountains, who think they must be surrounded with the great roar of city life, with its crowded stores, well paved streets, and merry play houses, a great treat is still in store for them. Just try a winter at Lake Hopatcong once and enjoy the experience, if nothing else. The contrast will be the first to impress you. That which, in summer, was coated with green, with a soft, blue sky about will be a mountain of white, glistening in the sunlight. The smooth surface of the lake, across which you had been accustomed to see pretty boats glide, tossed by the ripples of a summer breeze, will be of the same crystal whiteness, dazzling to the eye, but making one of the most beautiful sights one could imagine.

But it is the tingle in the blood, that feeling of new life which seems to thrub through every vein, which makes you glad you came and makes you want to stay longer. You put your hands on your chest and expand your lungs with keen delight.

Photographs

Anyone desiring to purchase photographs of the different points of interest at the lake will find a splendid collection on sale at the Harris Photo Boat. Mr. Harris has photographs galore, and everyone worth having. A visit to his boat will prove a pleasure whether you make a purchase or not. His prices are very reasonable.



ON THE STYX

Photo by Harris



THE WESTMORELAND HOTEL

A. S. BREANT, Prop. P. O. Address, Landing, N. J.

Is more convenient to the railroad and boats than any other hotel. It has just been renovated and painted all through; it accommodates 75 guests; terms, \$12.00 to \$15.00 per week, \$2.00 per day. Open all the year round; bath-rooms on each floor, with all modern improvements; steam heat. Hotel is situated on an elevation, in a well shaded grove and supplied with water from an artesian well 150 feet deep in solid rock; within 100 yards of Hopatcong station and all steamboat landings; livery attached. Booklet sent on application.



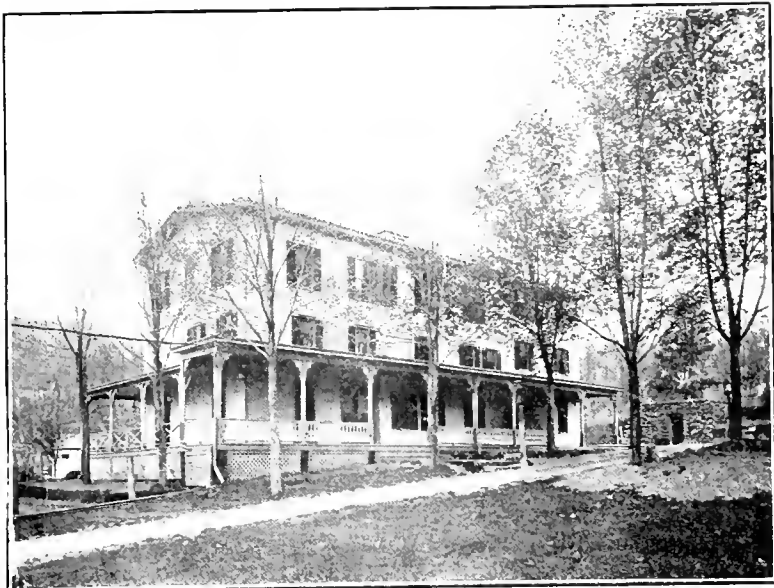
NOLAN'S POINT VILLA

G. L. BREANT Prop.

Accommodates 150, \$2.50 to \$4.00 per day, \$12.00 to \$20.00 per week. Open May 30 to October 1, charmingly situated on eastern shore of Lake Hopatcong, 100 feet above sea level, commands view of entire lake and surrounding mountains, grounds well shaded by forest trees, artesian well supplies soft and pure drinking water, macadamized road for cyclists, blue-bass, perch and pickerel fishing, boats, bait and guide secured at house, bowling and billiards upon the premises, bathing houses on shore point, excellent every attached, facilities for stabling patron's own horses, house reached by lake steamer.

Booklet.

The celebrated guide, Mathlon Decker, has full charge of the docks and boats. Mr. Decker has just purchased a land some launch called "Eva D." which is for the benefit of any pleasure parties who wish to secure it.



HOPATCONG HOUSE

MRS. F. MAST

Post Office Address, LANDING, N. J.

Beautifully located: plenty of shade: within one and a half miles from Landing Station: accomodates seventy-five people: open all the year: all modern improvements.

ELEVEN TO THIRTEEN DOLLARS PER WEEK

Fine large airy rooms: excellent table: automobile sheds and supplies.

Long Distance Phone 10



THE AMERICAN HOUSE

LAKE HOPATCONG, N. J.

Under personal supervision of F. C. GERARDS, is one of the most desirable resorts around the lake, situated one hundred feet above the lake; large rooms lighted by gas; hot and cold water, large parlors and veranda with plenty of shade trees. Private dock connecting at Hopatcong Station with steamboat; only three minutes walk from the lake. Boating, fishing, bathing. Elevation about 1,200 feet. All modern improvements. Modern family hotel with all home comforts.

The table is well-known to be first-class as well as the service, and only the best goods of the market are provided for the table.

Boating and bathing facilities, a fine fleet of sail boats and row-boats; automobile stables and livery attached.

Lake Hopatcong has a world reputation; hundreds of handsome cottages surround it and the American House is one of the most popular hotels; terms are from \$8.00 to \$15.00 per week.

A full line of sovermers for sale. Special rates for large parties by the season or for families. Public pay station.

Any letter addressed to

F. C. GERARDS, Hopatcong, N. J.,

will receive prompt attention, and circulars mailed



MOUNTAIN VIEW HOUSE, LAKE HOPATONG.
MULLER & BISHOP, Proprietors.

Telephone Call 112 Hopatong.

P. O. 1 mile, N. J.

This hotel is situated on the west side of Lake Hopatong, 14 miles from the D. L. & W. R. R. station and 45 miles from New York City. This hotel is a distance of 350 feet from the lake, on a beautiful elevation of 200 feet above the lake level and 1500 feet above the level of the sea, and commands a picturesque and extensive view of the wonderful Hopatong. This hotel has been greatly enlarged and improved by building a large veranda and all necessary conveniences, also by electric light. This first-class hotel contains the finest, largest and best ventilated rooms of any house on the lake. These rooms are furnished throughout with entirely new oak bedroom suits, hair mattresses, steel springs and all the latest improvements and are able to accommodate 150 guests.

Attached are bowling alleys, billiard room, swings, dancing pavilion and musicians for entertaining and sufficient row boats for accommodation. Splendid fishing on the lake for Pickerel, Black Bass, Perch and several other kinds of fish. No pains or expense have been spared to procure the pleasure and comfort of the guests. Cool and shady, no mosquitoes.

Low rates will be given according to location of rooms and accommodation. Special rates for guests staying all season.

Launches meet all trains. Livery for guests by order.

ROUTE, D. L. & W. R. R. depot at Hoboken, take Barclay, Christopher or 2nd street ferries. Convenient trains at all hours, week days and Sundays. Special trains for New York every morning and on Saturdays from New York. For further information see Time Table.



HOTEL HOLLYWOOD, LAKE HOPATONG.

C. R. LESPER, Proprietor.

P. O. LAUREL, N. J.

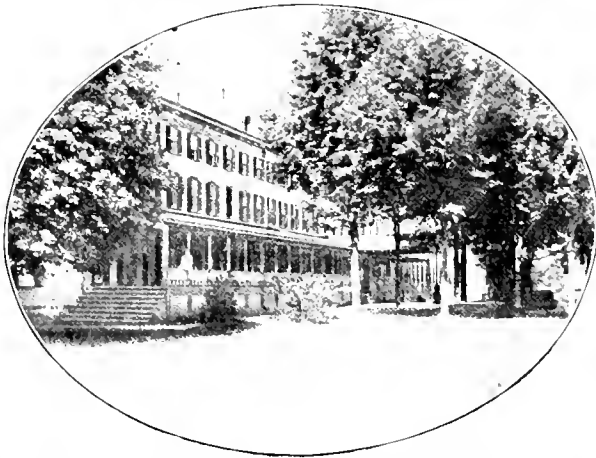
The Hollywood, 120 feet above sea level, is the most charming spot on Lake Hopatong. The house is equipped with all modern improvements, newly furnished throughout and up-to-date in every particular, and from every window in the house a view of the lake may be had.

Cuisine à la carte. Table delicacies from our own garden; fresh milk and butter from the farm. Boating, bathing, fishing, etc.

Rates: \$2.50 and \$3.00 per day; \$15.00 and \$18.00 per week. Booklet on application.

The station stop for this hotel is "Hopatong," on the main line of the D. L. & W. R. R. and "Lake Hopatong" on the C. R. R. of N. J.

The Hollywoods open all year round.



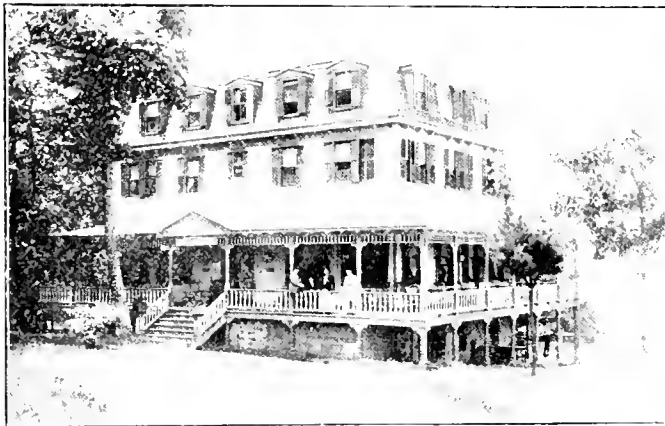
LAKE VIEW HOUSE

Thomas R. Moore Hotel Co.; accommodates 250; \$3 per day; \$16 to \$18 per week; located on an elevation 1200 feet above tide-water; bathing, fishing and splendid boating; cuisine unexcelled; water from artesian well; perfect sanitary arrangements; steam heat; gas; music.

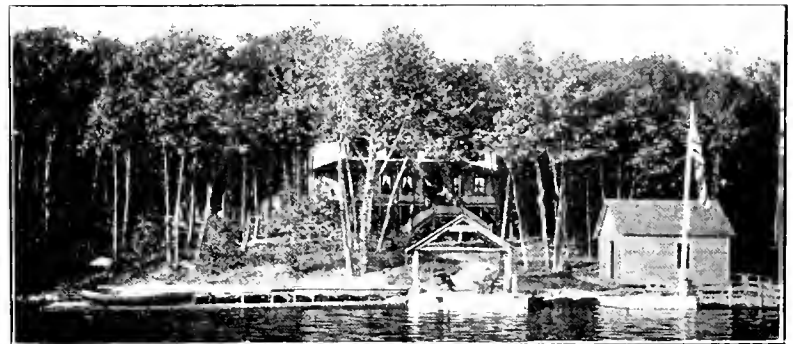


SUNNYSIDE HOUSE

M. M. Smith; accommodates 75; \$10 to \$12 per week; open all year; house well furnished and cheerful; light rooms; good table; pure water; conveyance at trains; booklet; best accommodation for fishermen; boats to let.

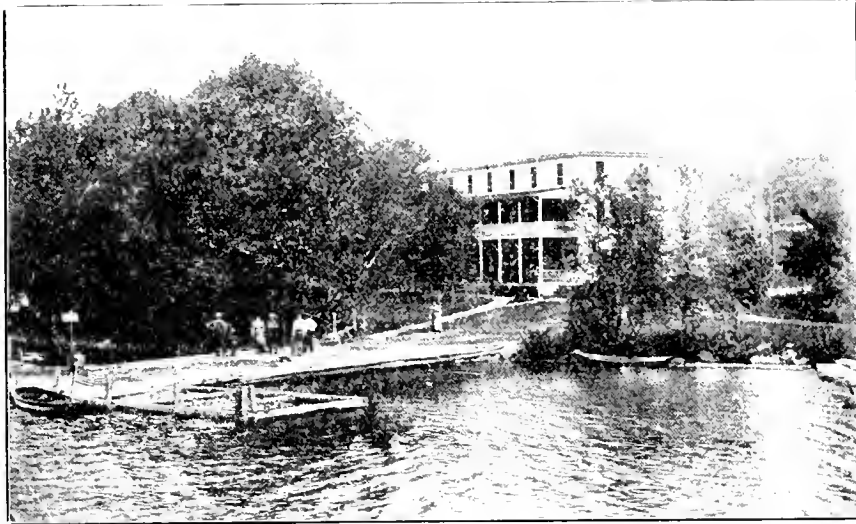


SCHAFFER'S HOTEL VILLA ON LAKE HOPATCONG, N. J.
Accommodates 500; rates \$2.50 to \$3.00 per day; \$12 to \$15 per week. Long distance telephone. Address: F. L. SCHAFER, Mt. Arlington, N. J.



WOODSTOCK

Mrs. A. G. von Campe; P. O. Address, Mt. Arlington, N. J.; accommodates 50; \$2.50 per day; \$12 to \$15 per week; open May 30 to Oct. 1; pleasant summer cottage; situated on the shores of Lake Hopatcong, adjacent to Hotel Creshin and four other principal hotels; fine private dock; splendid fishing; floating swimming baths and bath houses; excellent roads for driving and wheeling; all outdoor sports, including rowing and sailing; house modern and first-class, being equipped with all conveniences; cuisine excellent; conveyance at all trains.



SILVER SPRING PARK

HENRY SCHEER, Proprietor

On Lake Hopatcong, Morris County, New Jersey

SILVER SPRING PARK is situated in the most picturesque section on the east shore of Lake Hopatcong on a point with water on the two sides. Silver Spring Park House is surrounded by beautiful shade trees, affording tempting resting places during the warm weather, and suitable play grounds for the children, with numerous swings and summer houses there. The house contains thirty large rooms, all recently painted and papered and lighted by gas. The house also has a bath room and running water. The main floor of the house contains a large dancing parlor and wide piazzas, and a piano is furnished for the amusement of the guests, with regular private dances Saturday nights during the summer. The tables are supplied with fresh country vegetables in season direct from our own gardens. The location is healthful and free from mosquitoes. Good bathing and fishing.

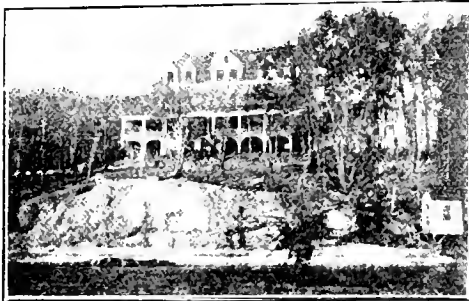
Rates: Our rates for board are from \$8 to 12 a week, \$2 per day; children half price.

For further particulars, address

HENRY SCHEER

Landing Post Office, Landing, New Jersey

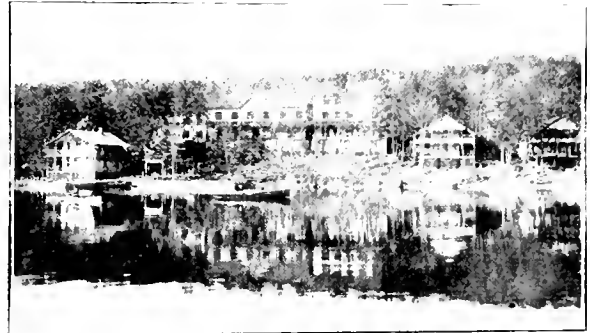
Or Telephone 6-A Mount Arlington



LAUREL HOUSE

On
Ship
Rock
P. O. Landing
LAKE HOPATCONG, N. J.

Boatmen located on Lake Hopatcong, opposite the Hotel Blossin. It accommodates for 20 to 25 guests, and is a modern resort. It has Gas, Hot and Cold Water, Baths, and Sanitation, Plumbing. The House is 180 feet from the Lake. Splendid modernized roads for driving, sailing, or boating. House reached



ITHANEL HOUSE Joseph Cooks; P. O. Address Landing, N. J. - open dates May 25 to \$12 per week, transient rates \$2 per day; open May 20 to September 25th; elevation 1000 feet; the Ithanel House is about half way up the lake, on the west side, and only 75 feet from the lake shore. Good bathing, boating and fishing, row boats and fishing boats to let at reasonable rates. House is modern, and first-class in every respect, rooms light and well ventilated, cuisine excellent. Send for circular.

Rates: \$2.00, \$2.50 per day, or \$10, \$16 by the week

Special Terms for June and September

A. POHL, Proprietor

P. O. Landing, N. J.



GENERAL STORE

THEO. F. KING

LANDING, N. J.

DEALER IN

Fine Groceries and Provisions

Fresh Eggs, choice Butter

Fishing Tackle and Hardware

Paints and Oils, Gasoline

GOODS DELIVERED TO ANY PART OF LAKE

CHOICE ICE CREAM AND CONFECTIONERY



Fishing and round bottom Boats to Let

Live Bait--Oars and boat Fitting



Cottages and Camping Sites
to Rent



P. O. Address - LEDGEWOOD, N. J.



ICE CREAM PARLOR

LAKE HOPATCONG REAL ESTATE

COTTAGES FOR SALE AND TO LET

BUILDING SITES FOR SALE

For information concerning Lake Hopatcong matters apply to

GEORGE W. CAMPBELL, THE LAKE HOPATCONG REAL ESTATE AGENT

Residence, Inverness; P. O., Lake Hopatcong; New York Office, 150 Broadway; Telephone, 790 Cortlandt

Chairman, Executive Committee of The Enterprise Realty and Improvement Company of Lake Hopatcong, President Lake Hopatcong Steamboat Company (Orange and Black Lines), Member, Executive Committee Lake Hopatcong Club (Owners Hotel Breslin), Chairman, Lake Hopatcong Protective Association, President, West Side Association, Treasurer, Castle Rock Park.

Agent for the following Companies for **FIRE INSURANCE:**

Springfield Insurance Co., Pennsylvania Insurance Co., New York Underwriters



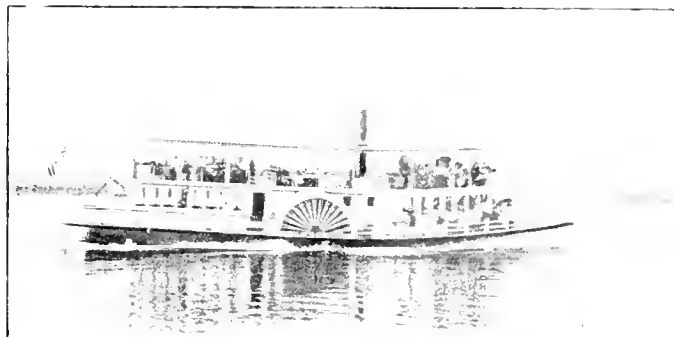
IDLE HOUR COTTAGE, LAKE HOPATCONG, NEW JERSEY.

Address, MRS. C. E. COOK, Prop.,

WOUND ARLINGTON, N. J.

Idle Hour Cottage is beautifully situated on Howard Boulevard, near the large Hotels "Breslin" and "Arlington," and three minutes walk of the picturesque Lake Hopatcong. Open from May 1st until November 1st, 1904. For the especial accommodation of parties desiring of a quiet home. **No Children.** Rooms are large and airy. Bath attached.

Terms: Single person, \$10; two in a room, \$18 per week - \$1.50 per day. All communications promptly answered. MRS. C. E. COOK.



THIS IS ONE OF OUR FLEET OF SIX BOATS

CHEAPEST RATES

BEST SERVICE

Hopatcong Steamboat Company

A. A. KING, LESSEE

LANDING P. O., N. J.



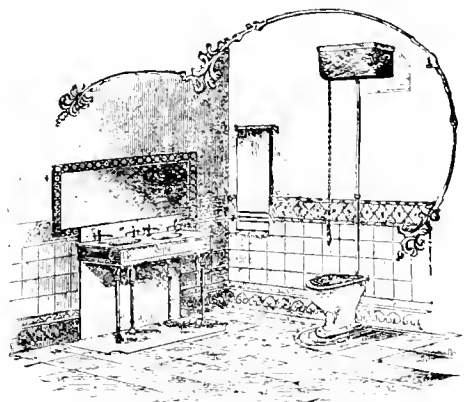
THE HALSEY ISLAND LAND CO., OF LAKE HOPATCONG, N. J.,
OFFERS CHOICE BUILDING SITES ON HALSEY ISLAND

In part of Floyd T. Woodluff, Plainfield, N. J.

Wm. H. Baker, Dover, N. J.

Eugene Troxel, Morristown, N. J.

Harry L. Schwarz, Dover, N. J.



*Sanitary
Plumbing
Steam
Heating
Gas Fitting
and Tinning*

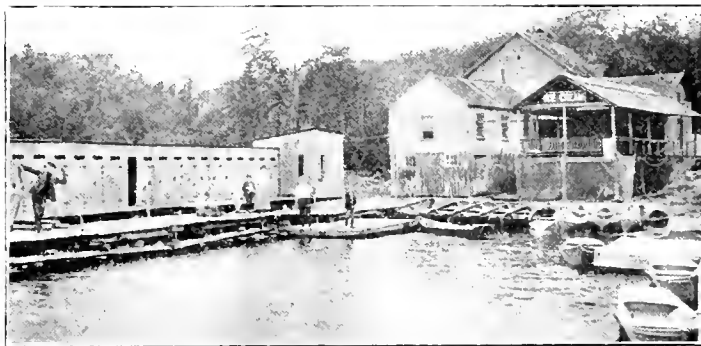
A. H. BLUMIE

Telephone 3, A. M., Arlington

MT. ARLINGTON,

NEW JERSEY

All points of lake reached by launch without delay.



MOUNT ARLINGTON DOCK

A complete assortment of Sailing, Rowing and Fishing Boats, Bait, Fishing poles, Bathing Suits, etc. for Hire.

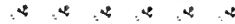
Also Refreshments in the line of Soda, Ice Cream and Candies.
We carry the best line of Cigars and Cigarettes on the lake front.

Wm. E. LEE, Proprietor

C. J. LEE, Manager

The Ideal Spot for a Summer Home, West Side of Lake Hopatcong
WE ARE PREPARED TO OFFER THIS SEASON SEVERAL NEW PROPERTIES
CHOICE WATER FRONT PLOTS FINELY LOCATED

Fine Upland Plots with access to the Lake, commanding fine view of surrounding country; Park Plots, one to ten acres, with access to the Lake provided; several hotel sites.



BYRAM COVE LAND CO.,
WARD & CO., LANDING, N. J.
203 BROADWAY, NEW YORK CITY

NETCONG, NEW JERSEY

New York, 49 miles. One way, \$1.40; round trip \$2.10;
monthly commutation, \$11.05.

FOREST HOUSE

E. T. JONES, PROP.

Post Office Address, Budd's Lake, New Jersey

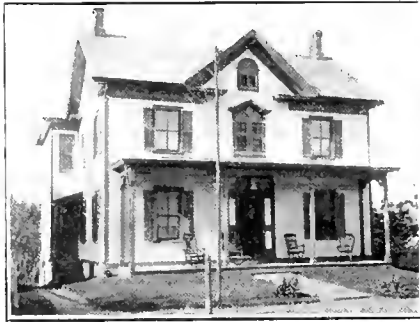
Accommodates 250; terms, \$6 to \$12 per week; open May 15th to November 1st; 2 1/2 miles from station, by stages which meet all trains; delightful mountain hotel, in the midst of the best bass fishing waters in New Jersey; large, airy rooms; perfect sanitary arrangements; pure spring water; excellent table; all modern conveniences; splendid roads for wheeling; private boats for pleasure parties. Write for booklet.



Port
Morris
House

F. N. S. DAVIS
Proprietor

PORT MORRIS,
N. J.



Situated on Macadam Boulevard, between Lake Hopateong and Budd Lake on the shore of Lake Musconetcong, the best fishing ground in Northern New Jersey for Bass, Pickerel and Trout. Accommodates 16; open from May to October. Home grown berries, vegetables and fruits in season. Conveyances will meet patrons at Hopateong station on notification. First class accommodations for summer guests. Rates, \$8 to \$10 per week.

We have our own dock and a number of boats.

LEDGEWOOD,
NEW JERSEY

Is one of the most delightful retreats in the mountains of Morris Co. It is better known to the older generation as Drakesville. It is within a mile and a quarter of Lake Hopateong and one mile from the Lackawanna station at Mt. Arlington. The scenery is unsurpassed and the drives most delightful. The macadam roads extend in every direction and wheelmen find every facility for his health giving sport. There are no mosquitoes.



LEDGEWOOD HOUSE is one of the old-fashioned, roomy, country hotels so attractive to those looking for rest and recreation. It has been newly furnished throughout and it affords every accommodation. There is a livery attached to the house and plenty of stabling for horses. Guests will be met at the Lackawanna station at Mt. Arlington, or the Central R. R. station in the village. All inquiries answered.

HOWELL GIBBS, Proprietor
Long Distance Telephone Call 6-B, Ledgewood.

A. M. JONES, NETCONG, N. J.

Manufacturers' Agent

FINISHED HAND MADE
VEHICLES.

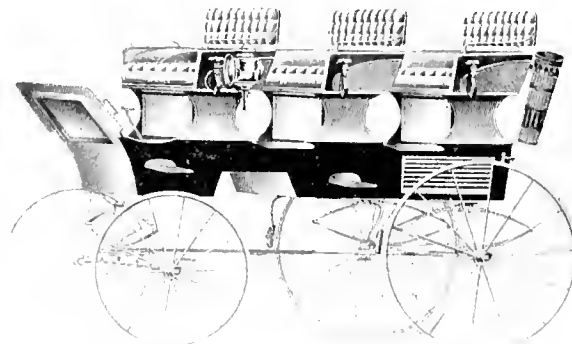
Carriages, Surreys, Phaetons and
Business Wagons.
Also, Harness of Every Description.
Big Bargains in Second Hand
Wagons of All Kinds.

Wagon and Carriage Wheels a specialty. New and second hand wheels of every kind and grade, ironed complete, ready for boxing. If what you want is not in stock, we can get it from our factory inside of a week. Buy from us and save the profits of the middlemen and retail dealers.

Special attention given to orders from
Lake Hopateong people.

P. O. Address - Netcong, N. J.

NETCONG, N. J.



..JONES' LIVERY..

STANHOPE, N. J.

BUDDS LAKE, N. J.

Also,

First-class

LIVERY

Double and Single Rigs, Stages and Carryalls, all up-to-date and at reasonable prices. Special attention given to the accommodation of Westlake and River Styx people. Also, Depot Service at Hopateong Station, when ordered.

Telephone 5-A, Netcong. Telegraph, Stanhope, N. J.

Lake Musconetcong, NETCONG, Morris County, New Jersey

Lake Musconetcong, one of the most beautiful of northern New Jersey's many attractive sheets of water, is located in the midst of the Jersey Highlands, 70 miles from New York, on the main line of the D. L. & W. R. R.

This beautiful lake is over a mile in length and nearly 1000 acres in extent, surrounded by gentle slopes and include a number of small islands.

A more attractive and available tract for building sites cannot be found in the state for hotel or boarding house purposes. Especially adapted to summer business. The tract is now on the market and to secure immediate improvement is offered at prices much below permanent value. It includes 50 lots, located in the Borough of Netcong, between the south shore of Lake Musconetcong and the state macadam road, with about 1500 feet of shore front. Early buyers will have first choice.

The tract is in excellent condition for immediate building lots dry and on high ground, sloping gently toward the lake, with public streets running through it in both directions. All the lots command a charming view of the entire lake; some in a beautiful grove near the lake shore and every lot is desirable, although some are offered as low as \$1000.

At present prices, the lots will net 100 per cent. profit as an investment within three years, but parties who contemplate the purchase of property for the immediate erection of residences or for hotel or boarding purposes, may secure a choice location here upon the most favorable terms.



The Borough of Netcong, about one and one-half miles along the southern shore of Lake Musconetcong and the Musconetcong river, has a population of 1300. It is about one square mile in extent and includes many of the most desirable building and home sites. It is 100 miles from New York; macadamized roads; pure spring water for domestic use or fire protection, lighted by electricity and a well equipped fire department, bank, a prosperous and progressive building and loan association; churches and a high school. Excellent railroad service to or from New York and the west, also to Newton and points in Sussex County.

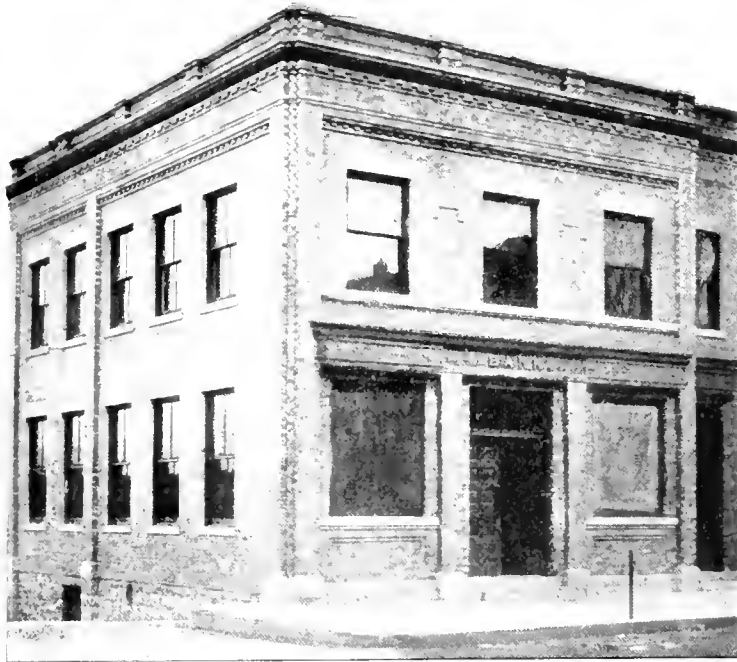
The waters abound with fish of the choicest of fresh water varieties, such as bass, pickerel, perch, catfish and many others.

The lake is at an altitude of about 600 feet above sea level, while surrounding hills near by reach the height of 1300 feet. The atmosphere is pure and bracing and no mosquitoes.

The building sites must be sold at once and the buyers will never regret their investments.

For any desired information or specific prices and descriptions of lots, suitable for specified purposes, call or address

JAMES DELL, NETCONG, N. J.



Citizens' National Bank

The citizens of Netcong and surrounding country are justly proud of the "Citizens' National Bank" of this town. While comparatively a new institution, its business, under its excellent care of officers, steadily increases and the official financial report for May is strong evidence of the fact.

The officers are: John S. Kennedy, President, H. A. Turnbull, Vice-President, and D. M. Cook, Cashier.

With a paid in capital stock of \$50,000.00 and a surplus fund of \$5,000.00, the officers, as stated before, have made excellent use of the money.



T. J. CLIFT, NETCONG, N. J.

*Dealer in Hardware, Paints, Metal Ceiling and Siding,
Portland Cement, Asphalt Gravel Roofing, Etc.*

"THE GLADYS"

W. C. CLIFT, PROPRIETOR.

LANDING, P. O., N. J.

This handsome Steamer makes four trips daily.

Signal: Red, White and Blue Flag.

H. W. THAYER, M. D.

PHYSICIAN AND SURGEON

LATE U. S. ARMY SURGEON

PHARMACY BUILDING

MAIN ST., TEL. NO. 1-1. NETCONG

ROCK SPRING HOUSE LEDGEWOOD, NEW JERSEY



THIS new and commodious house with all the modern improvements, now open for the summer, is beautifully situated on the Schooley's Mountain range, 1,100 feet above sea level, in a healthy locality, an excellent spring of pure mineral water; boating, bathing and fishing, is convenient to the D. L. & W. R. R. at Mount Arlington, 12 hours from New York; return tickets from New York city, \$1.00.

OSCAR SHEEP, Proprietor.

LEDGEWOOD, N. J.

MCGREGOR PARK

On Lake Hopatcong

LAND FOR SALE

Camping Grounds, Ten Dollars a Month

Agent, W. MEEKER LITTELL.

Mount Arlington

Morris County, N. J.



THE WOODPORT HOUSE Situated at northern end of Lake Hopatcong, accommodates 100, excellent fishing, boating and bathing, rooms and croquet, beautiful grounds. Rates: \$2 per day, \$5 to \$11 per week. Address: THOMAS BRIGHT, Proprietor, Woodport, N. J.



M. C. HAVENS, Books, Stationery, Maps, Fishing Tackle, Sporting Goods, Fishing Tackle, Anglers' Bait, etc. Store, 151 North Main Street, door from Mansion House, Dover, N. J.



SELDEN'S PHARMACY. H. H. Selden, M. D., Pharmacist.
Full stock of Drugs and Medicines.
Hayler's and Wallace's Confectionery. Delicious Ice Cream.
STANHOPE, N. J., 2 miles from lake. Telephone connection.

CHARLES D. SEARCH
LINDING, N. J.

...Mason and General Contractor...

ESTIMATES GIVEN ON NEW BUILDINGS
OR REPAIRING

FANCY STONE WORK A SPECIALTY

All orders by mail will receive prompt attention

Detroit Publishing Company

Sole Publishers of *Lac Prints*

Photint Color Post Cards

LARGEST COLLECTION OF

Scenic and Architectural Views
OF THE

United States, Canada, and Foreign Countries

Main Office and Works

DETROIT, MICHIGAN...

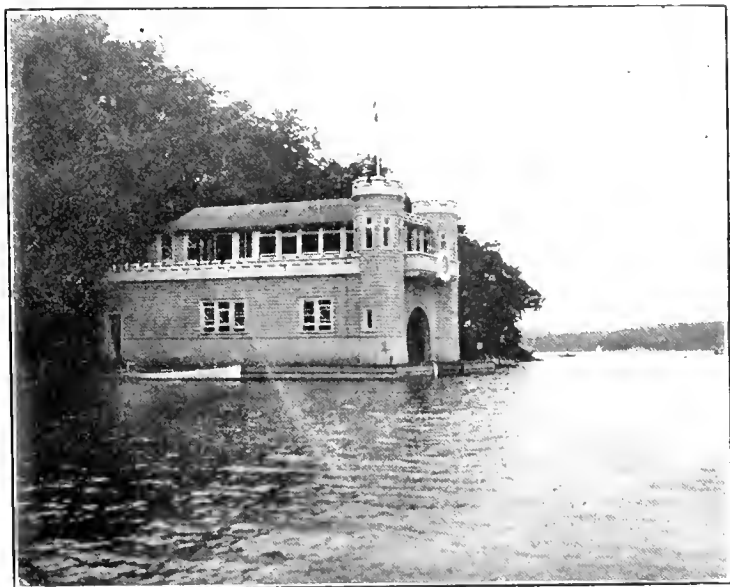
Branches:

New York: 234 Fifth Avenue
Los Angeles: 127 N. Main Street
London: Hoster Lane, E. C.



THE STANHOPE HOUSE. W. L. Brown, Prop. STANHOPE, N. J.

A first-class hotel; excellent table; gentlemen, room and board, \$7 per week; ladies, \$5; accommodates 30 guests; baths and electric lights; first-class livery attached; boating and fishing. Three miles from each of the following lakes: Budd's, Cranberry and Lake Hopalong.



BOAT HOUSE OF DR. G. A. VAN WAGENEN, ELBE
POINT, LAKE HOPATCONG. Built by J. W. Francisco

J. W. FRANCISCO

NETCONG, N. J.

Mr. Francisco has been in business for himself 8 years and is a thorough mechanic, and has built about one-half of the houses on the west side of the lake. Before entering business for himself he was foreman for Mr. A. J. Drake, of Netcong, N. J., now member of the firm "The Drake Bostedo Co." Mr. Francisco reputation as a builder and thorough mechanic in every respect can be seen by the many buildings he has erected; not only carpenter work but masonry and painting.

ESTIMATES WILL BE PROMPTLY GIVEN ON
RECEIPT OF PLANS

Mr. Francisco has just completed a handsome stone house for Thomas B. Atterbury, at Pickerel Point.



STANDARD SANITARY MFG. CO.

T. E. HAGGERTY

L. E. OSMUN

HAGGERTY & OSMUN

STANHOPE, N. J.

Sanitary

Plumbing, Steam Fitting, Tinning

STOVES, RANGES AND KITCHEN
FURNITURE

Agent for the Improved Rider and Ericson Hot Air
Pumping Engines

ESTIMATES FURNISHED
JOBGING GIVEN PROMPT ATTENTION

Telephone 141



JOHN P. FORCE, Livery, Sale and Exchange Stables

SUSSEX STREET, DOVER, N. J. Tel. 88-12 Hacks meet all trains

All orders by telegraph or telephone will receive prompt attention
All baggage will receive prompt attention to and from the depot

Horses and Carriages on Short Notice Coaches for Weddings and Funerals

L. A. LOZIER, P. O., Landing, N. J. **Espanong House,** GREAT COME N. J.
Lake Hopatcong

Connected with the Mount in View House Dock

Boats to let by day or week

Confectionery for sale

JOHN F. LANGABEL, Prop.

Tel. No. 7-17 Lake Hopatcong

P. O. Lake Hopatcong

Boating

Bathing

Fishing

EMIL PODLESAK, Pres.

ERNEST C. WARD, Sec.-Treas

New Jersey Engineering and Construction Co.

Morristown, N. J.

::: Electrical Engineers and Contractors :::

Complete Lighting and Pumping Equipments with economy and performance guaranteed, our specialty

The photos of the hotels in this book

were photographed by

PRICE, of Dover, N. J.

DAVID DREYFUS Tel. 335-12

Wholesale and Retail

Butcher

Hotel and Restaurant Trade a Specialty

2 Centre Market Both Phones Newark, N. J.

Wholesale Depot, Charlton & Court Sts.

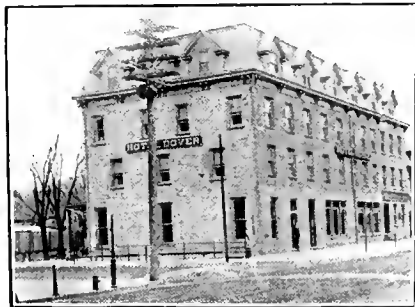
LEADING AGENCY FOR
LAKE HOPATCONG
REAL ESTATE AND FIRE INSURANCE

AGENT FOR
HEALSEY ISLAND LAND CO.
PROSPECT POINT LAND CO.

HARRY L.

Schwarz

SCHWARZ BLOCK TEL. 56 DOVER, N. J.



HOTEL
DOVER
DOVER, N. J.



J. B. BENNETT
Proprietor

A modern hotel, 8 miles from Lake Hopatcong, good train service to and from the lake.

RATES \$7.00 PER WEEK AND UPWARDS.

This hotel has been renovated throughout; open plumbing, electric lights, etc., and furnished in good shape
Good service, etc.

HOLDEN OINTMENT.

Cures all kinds of sores and burns.

W. WEEKER LITTELL

Mount Arlington, Morris Co., New Jersey

MANSION HOUSE

MORRISTOWN, N. J.

High Class Family and Transient Hotel

Clean and comfortable; with all improvements; the cuisine extra fine.

Special rates to summer guests. Breakfast 50c.

R. B. TRONELLI, PROP.

R. B. TRONELLI, MGR.

1905 20 1905

BOULEVARD HOUSE

Mt. Arlington, N. J.

Centrally situated. Open all the year.
Modern improvements. First-class cuisine.

Rates, \$2 per day; \$7 to \$9 per week.

F. J. WERNER, Prop.

W.H. H. YOUNGS

Succasunna, N. J. Tel. 2-B.

Steam and Hot Water Heaters,
Stoves, Tin and Sheet Iron Ware.
Plumbing, Roofing & Repairing promptly attended to.

Commissioner of Deeds and Collector,
Roxbury Township.

JOHN APPELGATE

Ledgewood, N. J.

MASON and
CONTRACTOR

All work promptly attended to.

JOHN MIDDLEAUGH

MASON and
CONTRACTOR

All work promptly attended to.

Mt. Arlington, N. J.

W.M. MIDDLEAUGH

*Great Cove, n. Espanong House,
Lake Hopatcong, N. J.*

Ice Cream, Candy, Soda, Fruits, Cigars, Etc.
Cream by the quart.

Dancing Tuesday and Friday nights.



S. ANDERSON

High Grade Bicycles and Supplies
41 W. Blackwell St., Dover, N. J.

A. L. SHOEMAKER

CARPENTER
and BUILDER

151 S. Morris St.

Tel. 50-L. Dover, N. J.

C. H. Benedict, Jr. C. H. Benedict, Sr.

C. H. BENEDICT, Jr.

12 W. Blackwell St., Dover, N. J.

CIGARS, STATIONERY
FINE CHOCOLATES

Toys Games Magazines Periodicals

J. J. VREELAND, Jr.

ARCHITECT

Lake Cottages a Specialty

16 West Blackwell St.

Phone 53-A. Dover, N. J.

Lumber,
Coal,
Masons' Materials
Hardware,
Boat Oars, etc.

EVERYTHING FOR CAMP AND COTTAGE LIFE

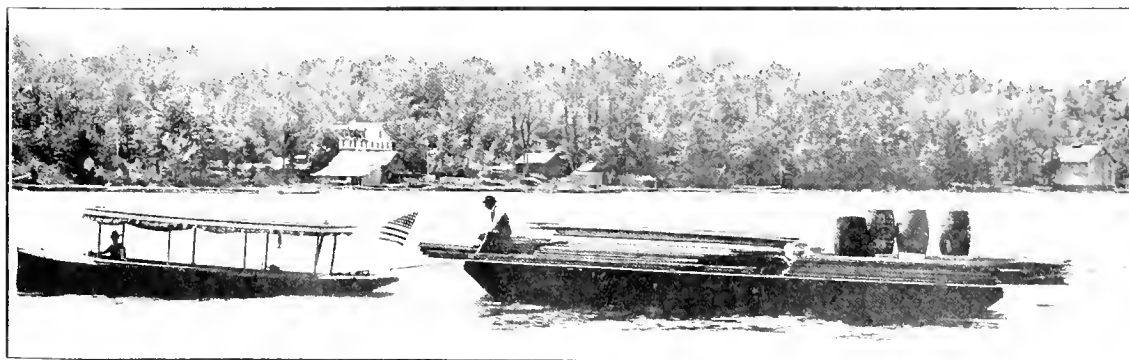
Telephone 5-4
Mt. Arlington N. J.

KENVIL LUMBER & STORE CO.,

LAKE HOPATCONG, N. J.

Dry Goods,
Groceries
and Provisions,
Crockery, Glass-
ware, Tinware,
Gasoline, etc.

TWO
LUMBER
and COAL
YARDS



THREE
GENERAL
STORES

OUR BOATS FOR DELIVERING MATERIAL



MT. ARLINGTON HOTEL, ON LAKE HOPATCONG

Situated on the Boulevard, in the Borough of Mt. Arlington, 200 feet from post office and 5 minutes walk to Lake. A strictly first class and up-to-date hotel with all modern improvements. Amusements of all kinds. Accommodates 100. All outside rooms. Stages meet all trains at the Mt. Arlington station, D. E. & W. R. R. and Lake steamers at Hopatcong Station land at our dock. Boats for pleasure and fishing; live bait, etc. Large stables and sheds for Automobiles. Gasoline always on hand. Booklet

JAMES LEVIE, PROP., MT. ARLINGTON, N. J.

L. D. Telephone No. 4, Mt. Arlington



AUG 74



N. MANCHESTER,
INDIANA

LIBRARY OF CONGRESS



0 014 224 984 4